

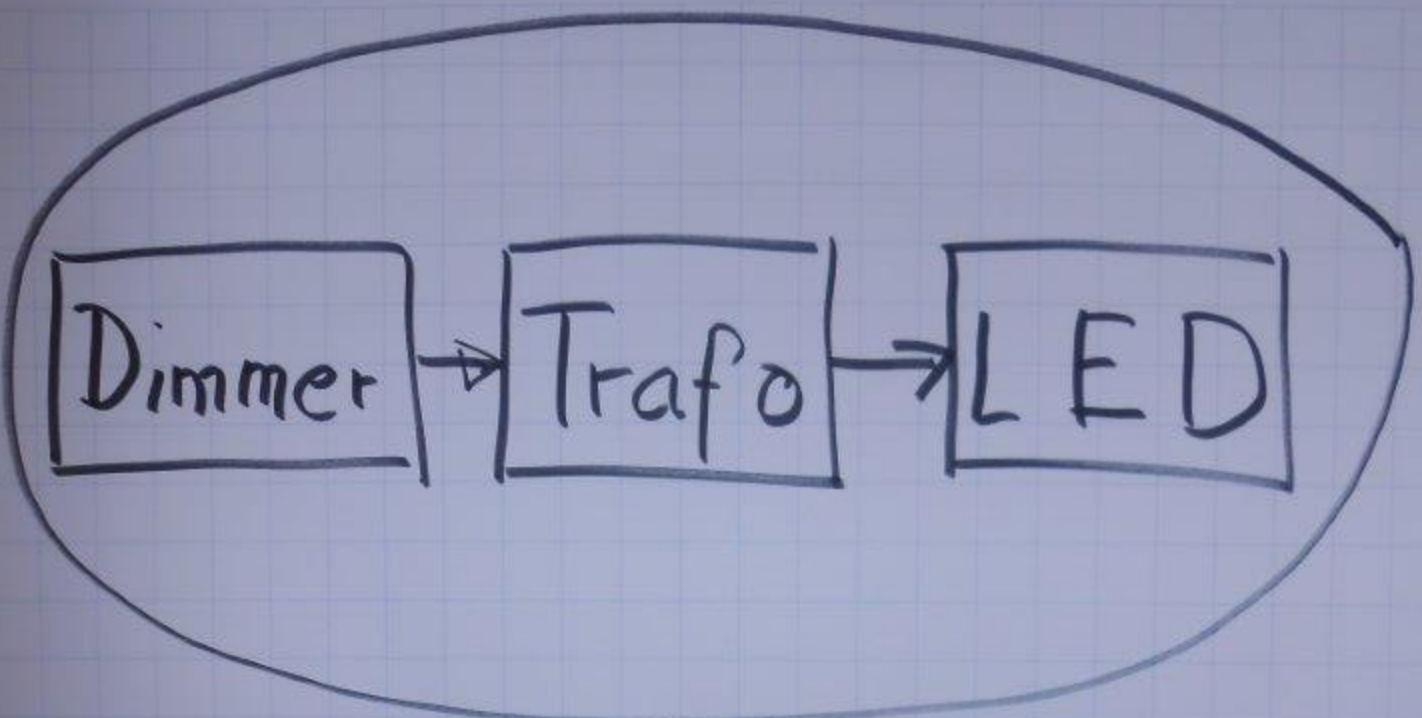
LED-Technik

Rote LED

Grüne LED

Blaue LED

weißes
Licht



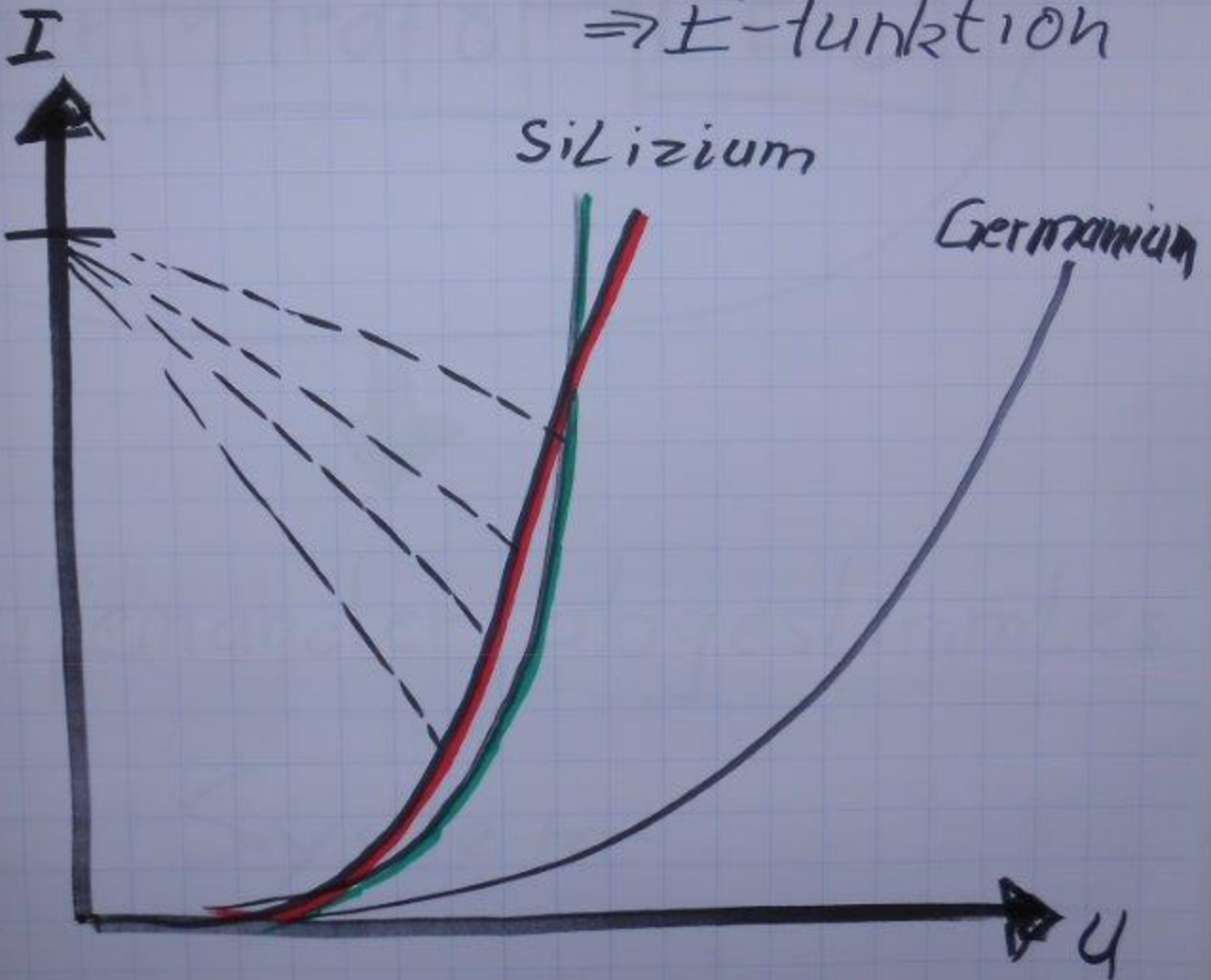
Aufeinander abgestimmtes
System

Dimmen



Nicht linear

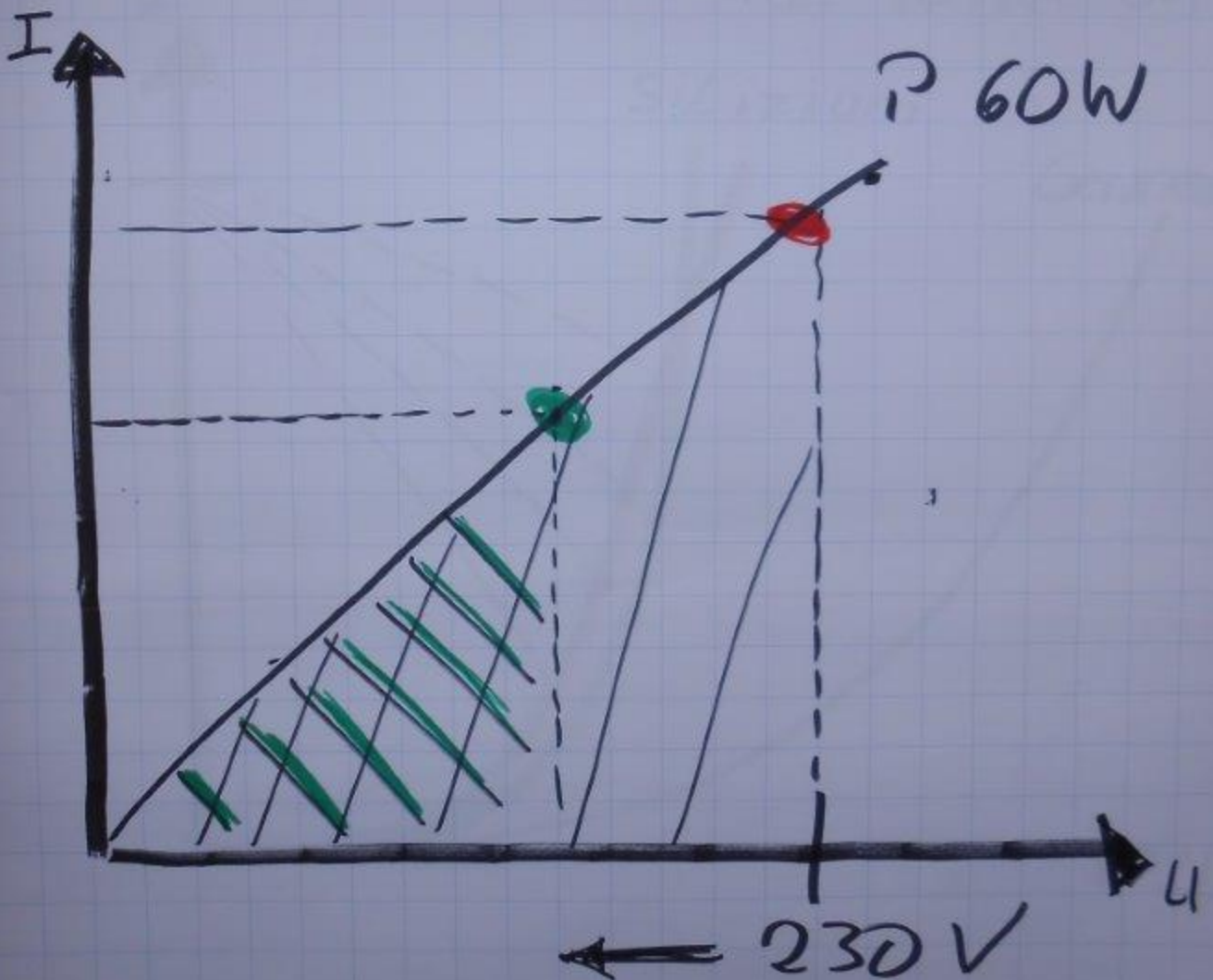
\Rightarrow E-Funktion




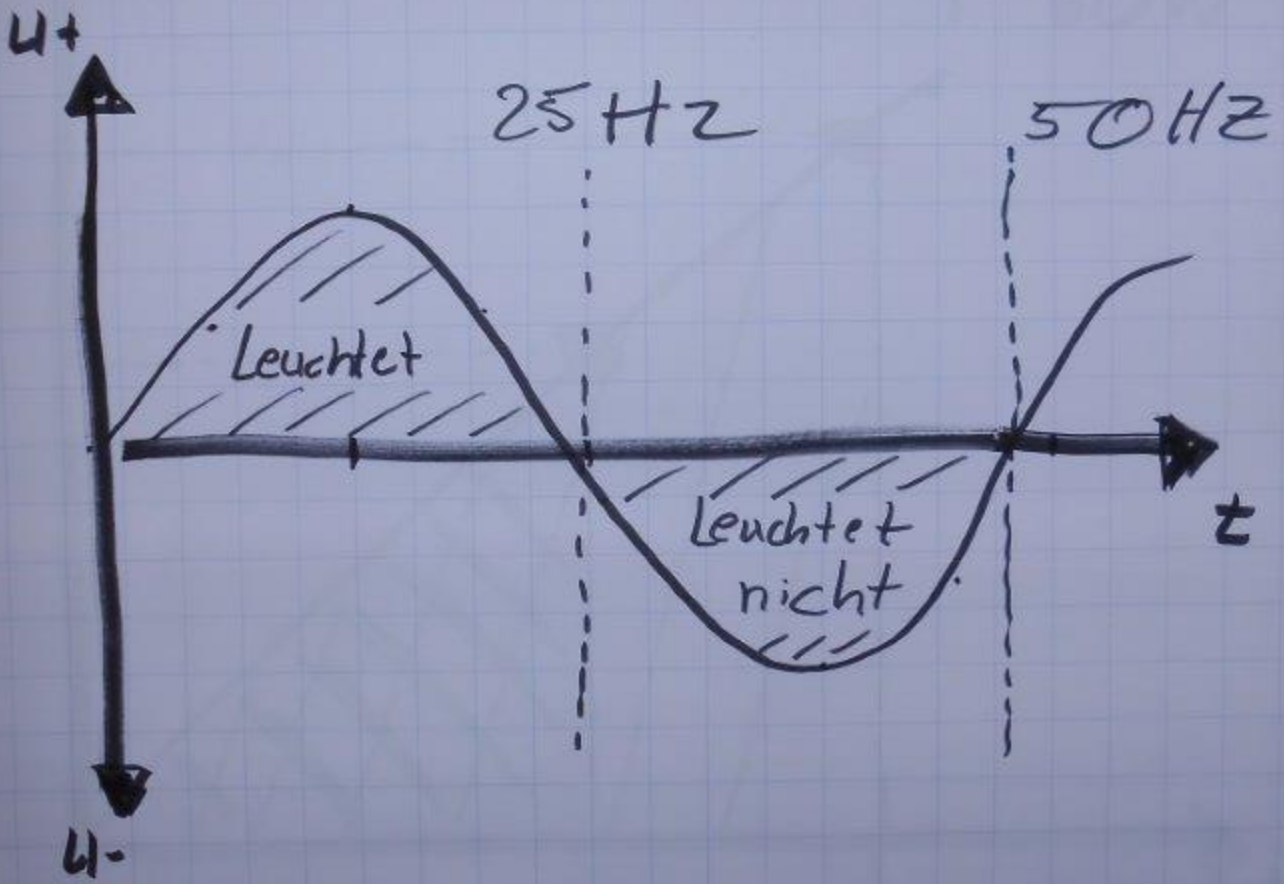
Dimmen



Lineare Kennlinie

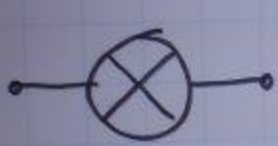


LED  Halbleiter



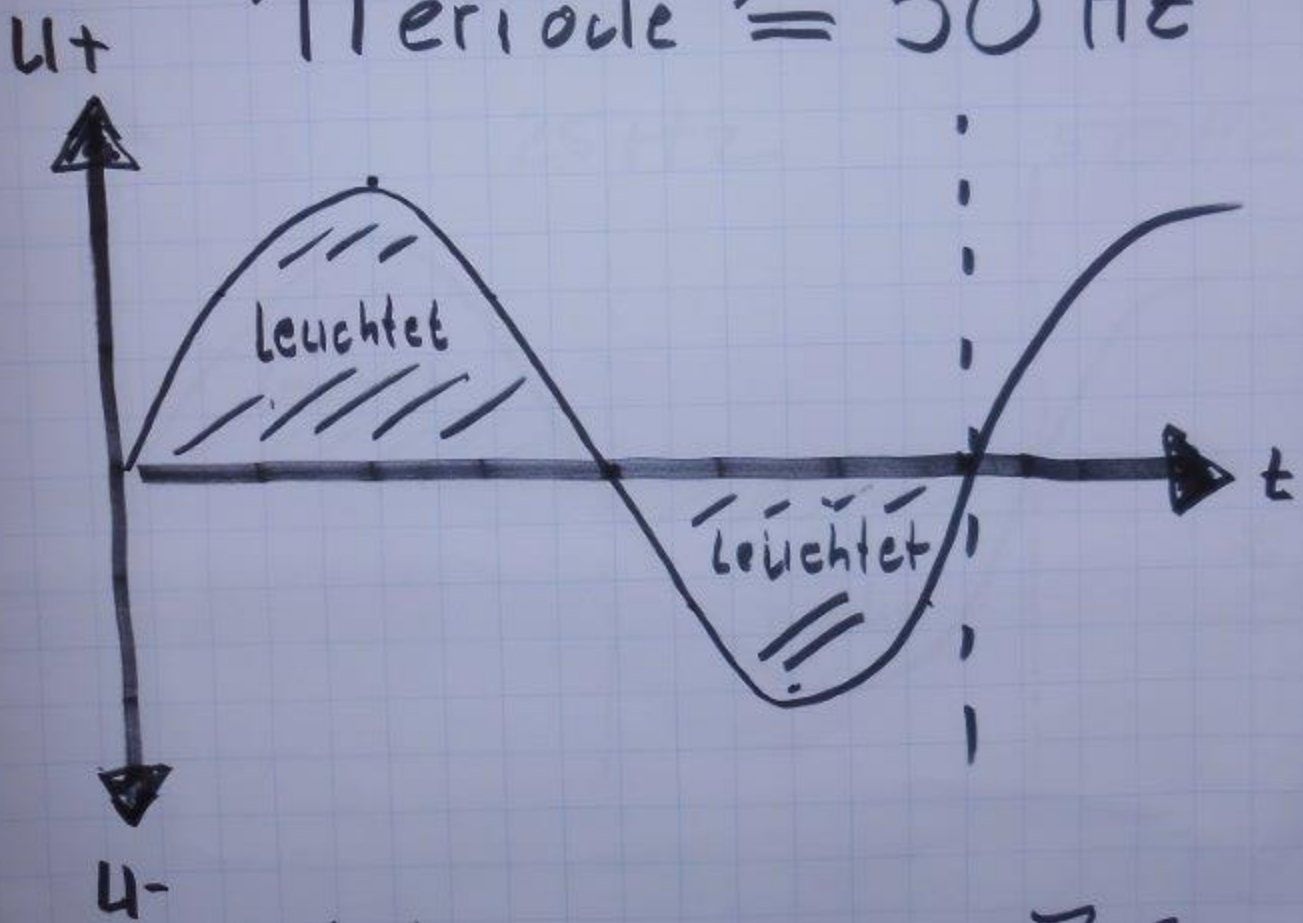
Gleichspannung DC

Normale Glühlampe



Volleiter

1 Periode $\hat{=} 50 \text{ Hz}$



Wechselspannung AC